

## STANDARD FEATURES

SPA MODEL	E864B
Seating Capacity	6
Acrylic	Basic
Dimensions (W x L x H)	93" x 93" x 39"
Dry Weight (Lbs.)	900 (408 kg)
Filled Weight (Lbs.)	4,340 (1,969 kg)
Water Capacity (Gal.)	450 (1,703 L)
High Performance Pump	2 x 6.0 HP
Pump(s) Voltage	240V
True Blue Vacuum Safety Break	Yes
<b>Total Stainless Steel Jets:</b>	<b>64</b>
Euro Less Eyeball (ELE)	24
Micro Flow Directional - 6 spoke (mfc)	28
Neck Jets (MNV)	3
Ozone Jet (OZ)	1
Power Storm Riffle - 6 spoke (PSR)	6
Power Storm Twister - 6 spoke (PST)	2
Tornado (T)	1
Ozonator (102C)	Yes
Waterfall, Cascade (OPT-329)	Yes
Pillows (Bump)	3
2" Plumbing	Yes
Comfort Diverter 2" Valve	2
Exclusive Bio Clean Filter™ Pop Up Filter Basket	50 sq. ft.
Spa Light (12V)	Yes
Exclusive Automatic Winterizing System	Yes
Exclusive "Green Pack" 40/50 Amp Equipment <small>(Only Available with 2 pump system) (N/A with XL Option in Classic Series)</small>	Yes
<b>Equipment &amp; Electrical</b>	<b>5100 Equipment with Oval Topside</b>
Flow-Through Heater (5.5kw)	Yes
Wall Drain	Yes
Pressure Treated Cabinet Frame	Yes
Cal Choice Cabinet Panels	Yes
Cover, Basic 4" Taper to 2.5"	Yes
Standard Bottom Tray	Yes
UL , CEC and VGB Approved	Yes
Warranty (Structural)	3 Years
Warranty (Finish)	3 Years
Warranty (Parts)	3 Years
Warranty (Labor)	3 Years

## AVAILABLE OPTIONS

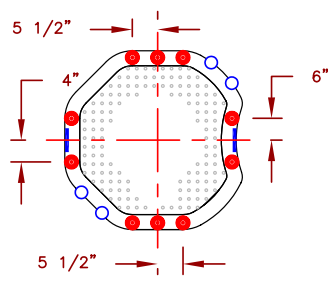
SHELL	
Standard Colors	Opt-211
Cover, Standard 5" Taper to 3"	Opt-136
Cover, Deluxe 5" Taper to 3"	Opt-133
Extended Adjustable Cover Straps (up to 391/2" Cabinet)	ACC01800700
CABINET	
ABS Bottom Tray (Adds approx. 2-3" in height)( 7' or 8' only)	OPT-247
Top Rail (N/A on Cal Wicker & Cal Choice Cabinets ; Adds approx 3" in width)	OPT-991
Full Foam Insulation	Opt-600
Thermo-Layer Cabinet	Opt-829
2 Corner Side Cabinet Lighting (Cal Preferred cabinets only)	Opt-863-2



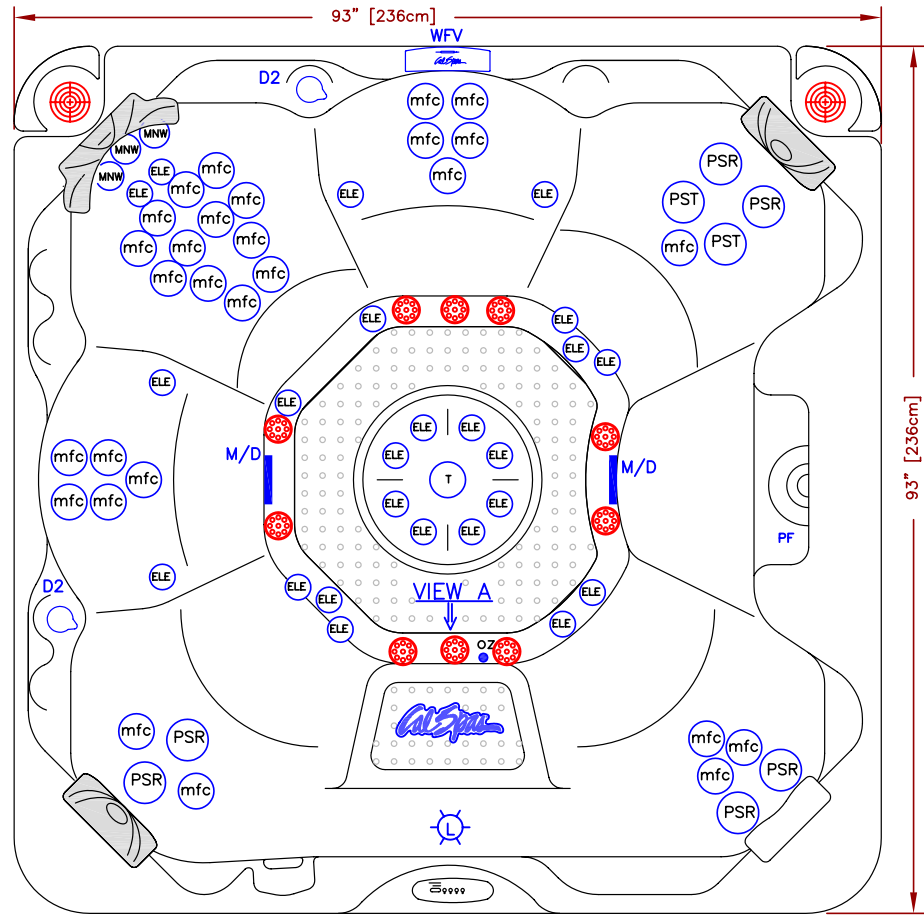
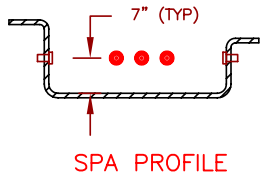
## AVAILABLE OPTIONS

CABINET (continued)	
4 Corner Side Cabinet Lighting (Cal Preferred cabinets only)	Opt-863-4
2 Corner Under Cabinet Lighting (Cal Preferred cabinets only)	Opt-864-2
4 Corner Under Cabinet Lighting (Cal Preferred cabinets only)	Opt-864-4
2 Corner Illumipanel Cabinet Lighting (Cal Preferred cabinets only)	Opt-866-2
4 Corner Illumipanel Cabinet Lighting (Cal Preferred cabinets only)	Opt-866-4
Cal Preferred Cabinet Panel	OPT-989
Cal Design Cabinet Panel (N/A with Top rail)	Opt-977-D
Cal Stone Cabinet (Gold / Platinum)	Opt-955
Cal Wicker Cabinet (Smoke) (N/A with Top rail)	Opt-971
PLUMBING	
Stainless Steel Cobalt Blue Jets	OPT417-BLU-2
Cabinet Accessible Drain Valve	Opt-129
Gate Valve(s)	Opt-400
Turbo Air Injection (Adds 10 Air Jets)	Opt-800F2
EQUIPMENT	
Exclusive Pure XL™ System ( 6200 Equip. Pack, XI Heater, Spa Cal Filtration, UV Light)	OPT-190-2
Exclusive Cal-Clarity™ Bromine Generator	Opt-911
Exclusive 24 Hr + Filtration™	OPT-112
Exclusive Spa Cal Filtration™	OPT-110
Spa LED light	Opt-860
LED Perimeter / Waterline Lighting	Opt-860P
Stereo System iPod Station Only with Two (2) 4" Speakers	Opt-S107
Stereo System CD player, MP3 with Two (2) 4" Speakers	Opt-S106
Marine Stereo System CD player, MP3 with Two (2) 4" Speakers	Opt-S110
Freestanding 32" Outdoor LCD TV with Swivel & Remote	ELE09306000
"iSound" Remote iPod Dock with Portable Speaker	ELE09307000
RECOMMENDED ACCESSORIES	
Rock-It Cover Lift (Undermount)	ACC01601020
Comfort Steps Mist(Mi), Smoke(S) or Mahogany(M)	ACCOHS2( )
Cantilever Umbrella with Cross Base Rust(R), Navy(N) or Cream( )	ACC01800600( )
Cantilever Umbrella with Flat Base Rust(R), Navy(N) or Cream( )	ACC01800610( )
Starter Chemical Kit ( Bromine or Chlorine)	CHE07000290-B CHE07000295-C

LINE	ESCAPE
MODEL	E864B
NUM	



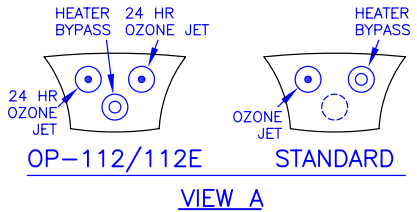
**AIR INJECTORS  
LOCATION**



**OPTION**

- = STEREO SYSTEM (INCLUDES 2 SPEAKERS)
- = AIR INJECTORS

**US/INTERNATIONAL**



**64 JETS  
LEGEND**

QTY.	SYMB.	DESCRIPTION	
24	(ELE)	EURO LESS EYEBALL - 6 SPOKE	(PLU21703663)
6	(PSR)	POWER STORM RIFFLE - 6 SPOKE	(PLU21703666)
2	(PST)	POWER STORM TWISTER - 6 SPOKE	(PLU21703665)
28	(mfc)	MICRO FLOW DIRECTIONAL - 6 SPOKE	(PLU21703664)
3	(MNW)	NECK JETS	(PLU21703627)
1	(T)	TORNADO	(PLU21703629)
1	(WFV)	WATERFALL W/VALVE	
2	(D2)	2" DIVERTER VALVE	
1	(OZ)	OZONE	
1	(L)	LIGHT	
2	(M/D)	MAIN DRAIN	
1	(S/F)	POP-UP FILTER (50 SQ.FT.)	

NOTE:  
DUE TO OUR CONTINUOUS IMPROVEMENT PROGRAM, ALL MODELS  
AND SPECIFICATIONS ARE SUBJECT TO CHANGE WITHOUT NOTICE.

SPECIFICATIONS		
DIMENSIONS	93" X 93" X 39 1/2" [236cm X 236cm X 100cm]	
WATER CAP.	450 GAL [1,700 L]	
APP. WEIGHT	900 LBS [408 Kg]	

TITLE  
**2010 SPA LINE  
ESCAPE SERIES  
E864B**

DWG NO.	DWG BY <b>A. MORATAYA</b>
DATE <b>11/16/09</b>	REVISED

SCALE: N/A